



Spatial Analysis of Noise in Kufa University (Kufa River Campus) using GIS

Raghad N. Hussein¹, Ahmed H. Al-Sulttani^{2,*}

¹Map Production Department, State Commission of Survey, Ministry of Water Resources, Baghdad, Iraq,
raghadnassier13@gmail.com

²Environmental Planning Department, Faculty of Physical Planning, University of Kufa, Najaf, Iraq,
ahmedh.alsulttani@uokufa.edu.iq

*Correspondence: ahmedh.alsulttani@uokufa.edu.iq

Abstract

Noise refers to unwanted sound that causes great discomfort to the ears and is usually measured in decibels. Very high levels of sound above 100 dB cause permanent hearing loss. This study deals with the effect of noise in the academic areas of the University of Kufa, Kufa River Campus (Faculty of Urban Planning, Faculty of Law, Faculty of Archeology). Kufa River campus area is exposed to several types of external noise. Noise field data has been measured and collected for 98 station points. The noise intensity ratio was measured using the Sound Level Meter at three different times during the working hours: in the morning (8.30–10.30), at noon (10.30–12.30), and in the afternoon (12.30–2.30). The data were analyzed using the Excel program (percentile method) to obtain noise level values at 10%, 50%, and 90% of the data after arranging them ascendingly. The equivalent noise level (Leq) is calculated as well. The equivalent noise level data is converted to a GIS program for mapping and studying the spatial variation of noise intensity using the Spline interpolation method. The results showed that the effect of external noise is much greater than the effect of internal noise. The highest noise intensity at the points near the fence reached 94 decibels, the lowest noise ratio was in the center of the faculty of physical planning, and the points near the green trees reached 45.1 db.

Keywords: Noise, Academic campus, Spatial, Spline, GIS, Kufa

Received: February 04th, 2021 / Accepted: May 06th, 2021 / Online: May 11th, 2021

I. INTRODUCTION

The (noise) refers to an unwanted sound that causes great noise in the ears and is usually measured in decibels. Noise is a big problem when sound levels exceeding 100 decibels, which can cause permanent hearing loss. The study of noise pollution has received great attention because of its harmful effects on public health. Therefore, the causes of noise must be examined to improve human health [1, 2]. In educational facilities, noise is a real problem and directly impacts the quality of education. Ideally, the sound level should be about 35 dB in classrooms [3, 4].

According to the laboratory, field, and epidemiological studies, it was found that there is a relationship between health effects such as heart disease and others and long exposure to certain noise levels [1, 5, 6]. There is a close relationship between poor mental performance, level of education, and noise level, especially in studies that require thinking and mental effort. The people's mental ability is affected a lot by

exposure to noise for one second reduces focus for 30 seconds [1].

Many studies have been implemented to study the impact of noise pollution in educational areas. Ozer, et al. [7] measured the noise in Ataturk University's campus in Erzurum, Turkey. The study results revealed that the noise level was more than 55 dB, ranging between (62-70) dB. Maps were created to indicate the noise levels throughout the campus, to be used later as a reference in planning stages for new universities [7]. Padhy and Padhi [8] explained that noise is a prominent feature in the environment. It has several types, including the noise generated by transport, industry, and individuals, and showed that the accurate measurement of noise levels is an essential part of the noise assessment. From June to December of 2005, the results showed that noise is widespread in the region, and the sources of noise are varied, including natural and traffic. The building's structural design plays a vital role in noise management [8-10].

The study of noise in the University of Gauhati in India near the highway showed that the effect of traffic noise on the university was studied and measuring noise were taken in three time periods per day as the morning period extended from (9:00 to 11:00) and the midday period (12 hours to 11 hours). 2) The evening period (from 6 hours to 8 hours) in April and May. The noise level exceeded the permissible limits specified by the "Center for Noise Control in India" in the morning period, and the lowest noise level was in the mid-daytime [11].

This paper is studying the spatial and temporal variation of noise on the educational campus at the University of Kufa, (Kufa river campus), which includes (faculty of Physical Planning, Faculty of Law, Faculty of Archaeology) using field-collected data and GIS.

II. STUDY AREA

The study area (Fig.s 1 & 2) is located in the Najaf Governorate district of Kufa, which has an area (26,172.8 m²). It extends between lat. 32°2'6"-32°2'10" N and long. 44° 24' 32", 44°24'40" E, to the east of An-Najaf governorate along with Euphrates river (Kufa part).

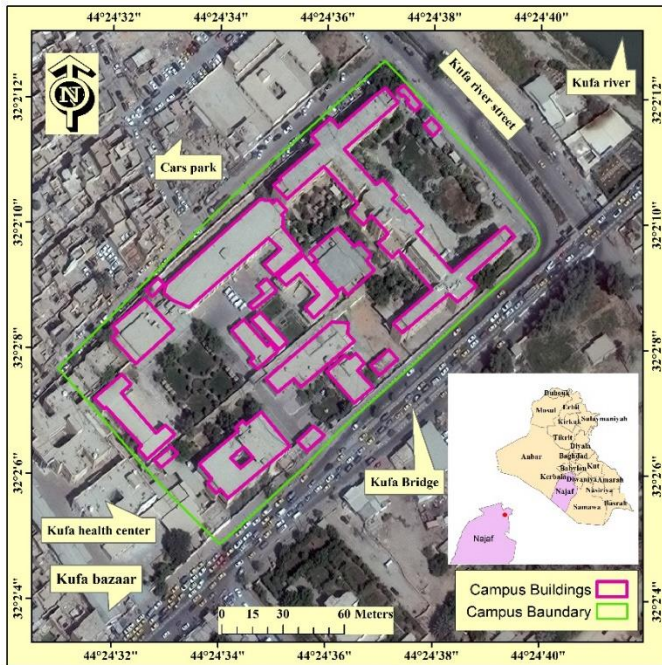


Fig. 1. Study area

III. MATERIAL AND METHOD

A. Material

The recording of noise levels has been done and covered the whole study area with enough station points (98 points) to study the variation of intensity of noise and interpretation the results to discuss the spatial variation. Sixty station points are inside the campus with distance (from 8 to 20 m), and 38 points outside the campus (Fig. 3).

Noise detector type (B07FLX8L49) has been used to measure the noise in each station point. The recording of noise levels for each point was for an average time equal to 30

minutes every three times (morning from 8:30 to 9:30, noon from 10:30 to 11:30, afternoon from 1:30 to 2:30) by using two devices for measured intense of noise called (sound level meter) for 50 days. All collected data have been processed using MS Excel software.

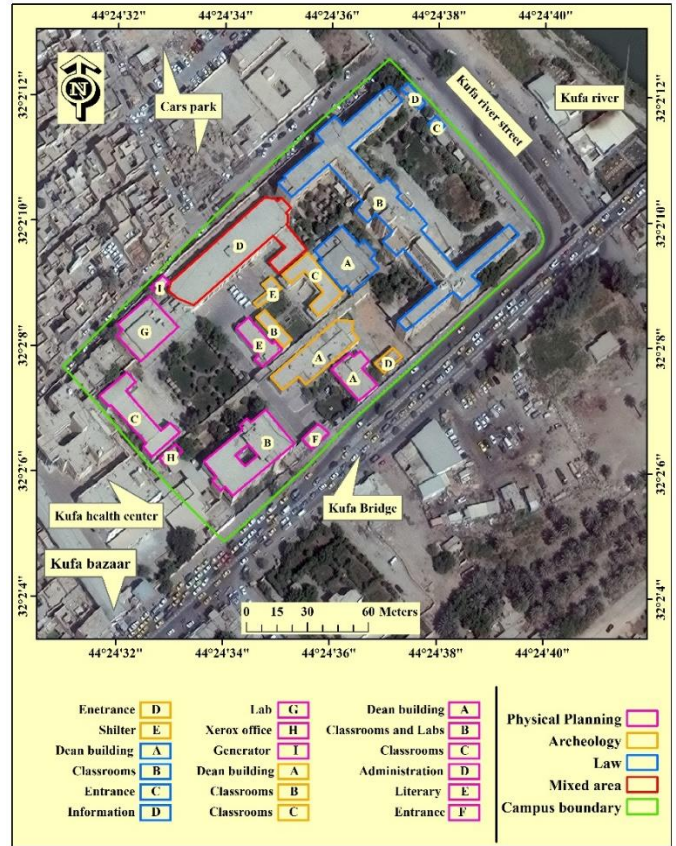


Fig. 2. The University of Kufa Campus buildings

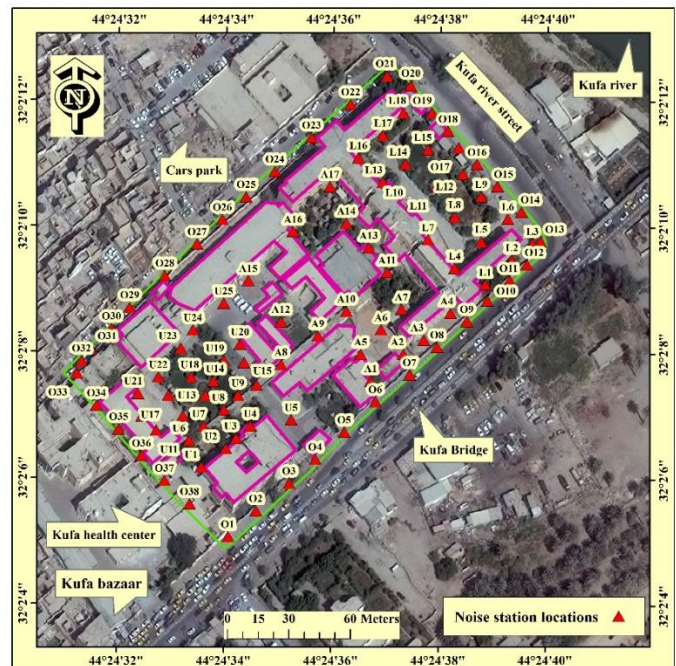


Fig. 3. Noise measurement station points.

B. Method

Equivalent noise level (Leq) has been calculated for each point every time. Equivalent noise level is defined as a constant sound level with the same level of acoustic energy as an oscillating level over a specified time. The equivalent continuous noise level has been adopted in many countries to measure and evaluate noise. It is called by several names, including the energy level and the continuous sound level. It is expressed mathematically using the following equation (Avinash, 2010).

$$Leq = L50 + (L10 - L90) \cdot 2 \cdot \sqrt{56} \text{ db}$$

Leq = equivalent noise level

L10 = Noise level that exceeds 10% from readings

L50 = Noise level that exceeds 50% from readings

L90 = Noise level that exceeds 90% from readings

C. Interpolation:

The second step of work is processing data to create spatial maps using interpolation tools in geographic information systems (GIS). There are many techniques for interpolation to study the variation in the intensity of noise in the study area. The spline method shows the best results in the variation of intensity of noise.

Spline estimates grid cell values by fitting a minimum-curvature surface to the sample data. It is like a flexible sheet of plastic that passes through each data point but bends as little as possible. The difference between regularized and tension splines is flexibility.

IV. RESULTS

The result illustrates the computation of equivalent noise level in three different times (morning from 8:30 to 10:30, noon from 10:30 to 12:30, afternoon from 12:30 to 2:30). In the morning, the computation of equivalent noise level shows that the intensity of noise level exceeded the limit of more than 70 db at the faculty of Physical Planning, faculty of Law, and the street that led to the faculty of Law Fig. 4. The spatial analysis of noise distribution was along the road from the bridge to the entrance of the faculty of Law (traffic noise). Noise intensity is reduced in the area behind the campus. The road leads to the bazaar, and the back garden located between Archeology and Law, because these places are located far from traffic noise.

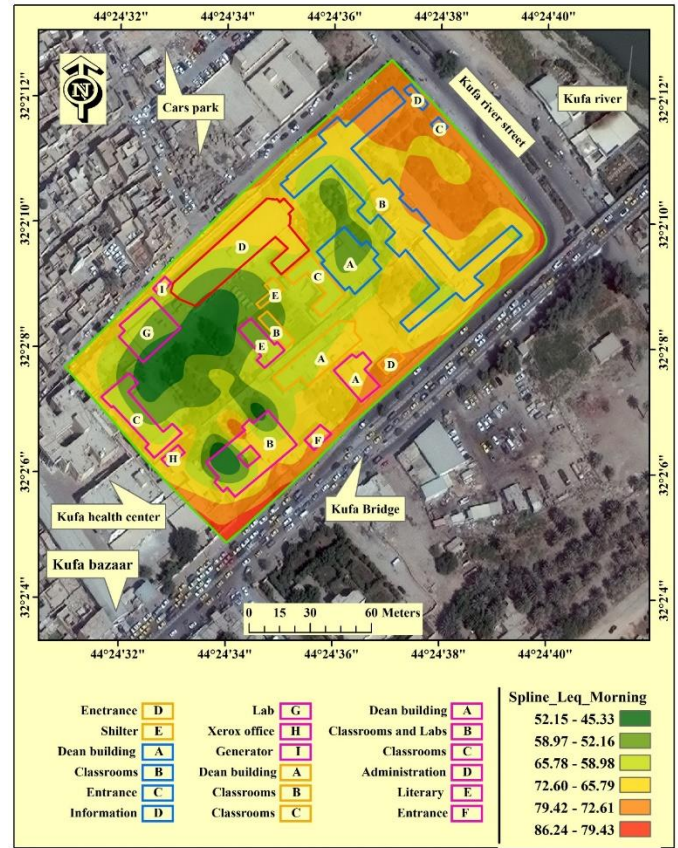


Fig. 4. Interpolation Map of Equivalent Noise levels in the morning.

In the noon, the spatial distribution of equivalent noise level is exceeded 75 dB in the classrooms building corridor in faculty of Physical Planning Fig. 5. Through the maps resulting from analyzing the data taken at (students' resting time between lectures). It was noticed that the highest noise values were recorded at the entrance to the classroom buildings, especially at the faculty of Physical and Law. Speaking loudly and using mobile phones at times increase the noise intensity in addition to the outside noise

In the afternoon, the noise level is reached to a maximum level of more than 90db and a minimum 60 db that means there is a very high dangerous noise level (Fig. 6). The highest value of the afternoon's noise level is near the study area's boundaries. This shows the effect of outside noise and the students crowding near the faculty gates near the library of the faculty of Physical Planning Archeology, and Law. The rising of noise intensity at those places is because of student and teacher cars and bus traffic noise.

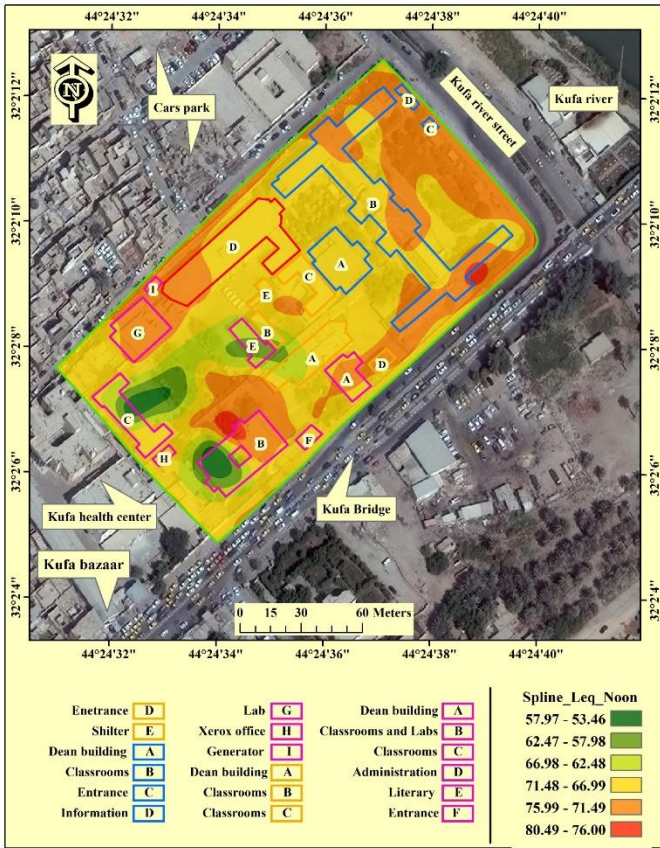


Fig. 5. Interpolation Map of Equivalent Noise levels in the noon.

Traffic noise significantly affects the study area and is the first noise source in the area. The areas most affected by noise are the building of the classrooms at the faculty of Physical Planning and faculty of Law (that is, the areas near the outer fence). The least affected areas are the faculty of Archeology and the areas surrounding the gardens and the building located between the faculty of Archeology and the faculty of physical planning. The lowest level of noise 44 dB in the morning in the area near the building between the faculties of Physical Planning, Archeology, as well as near the Center of Faculty of Physical Planning and Garden Faculty of Archeology, and the highest level of intensity noise exceeds 91 dB near the outer fence of the study area, especially on the Kufa bridge side.

V. CONCLUSIONS

After field data at three times and for 98 points distributed in the study area, and the statistical and GIS analysis, it found that the area is exposed to a very high noise level and does not match international standards, whether at the inside or outside. The spatial noise distribution maps using spatial interpolation show that the best type to represent the noise is Spline. It consists of polynomial sidelines connected to represent the surface between the measured readings and gives an ideal result closer to reality. It uses the least-squares method and the polynomial method.



Fig. 6. Interpolation Map of Equivalent Noise levels in the afternoon.

Through fieldwork, the noise level is below when the whereabouts of green trees, especially in the garden of the Faculty of Physical Planning. It means that the density of the trees can reduce the noise that comes from outside the campus. Green belts surrounded the campus will reduce the noise significantly.

The design aspect of buildings can create a suitable environment for living, working, and studying using the correct design. Developing strategies and carefully selecting the building elements in the design phase, so noise control must get serious attention. In the study area, it is difficult for us to rebuild buildings from many aspects, including cost, procedures, and difficulty in obtaining legal approval for reconstruction. Therefore, we will resort to other methods to reduce noise, including:

- Renovate the exterior of buildings, use sound-insulating materials, sound-absorbing materials, and make the facade rough to weaken the reflected sound waves.
- Reduce the windows in each of the classrooms, or making them double-glazed and repairing the damaged ones to make them airtight.
- The use of curtains with a thick cloth helps reduce the intensity of noise, and it is also possible to add somewhat thick floor coverings and cover the corridors

with them to absorb the sound of those passing by in the corridor beside the classrooms

REFERENCES

- [1] B. Berglund, T. Lindvall, D. H. Schwela, and W. H. Organization, "Guidelines for community noise," 1999.
- [2] A. S. Niskar, S. M. Kieszak, A. E. Holmes, E. Esteban, C. Rubin, and D. J. Brody, "Estimated prevalence of noise-induced hearing threshold shifts among children 6 to 19 years of age: the Third National Health and Nutrition Examination Survey, 1988–1994, United States," *Pediatrics*, vol. 108, no. 1, pp. 40-43, 2001.
- [3] E. A. Akintunde, J. Y. Bayei, and J. A. Akintunde, "Noise level mapping in University of Jos, Nigeria," *GeoJournal*, pp. 1-13, 2020.
- [4] B. Goswami, Y. Hassan, and A. J. Sarma, "The effects of noise on students at school: A review," *International Journal of Latest Engineering and Management Research*, vol. 3, no. 1, pp. 43-45, 2018.
- [5] M. Basner *et al.*, "Auditory and non-auditory effects of noise on health," *The lancet*, vol. 383, no. 9925, pp. 1325-1332, 2014.
- [6] F. Van Dijk, "Non-auditory effects of noise in industry," *Int. Arch. Occup. Environ. Health*, vol. 59, pp. 147-152, 1987.
- [7] S. Ozer, M. Zengin, and H. Yilmaz, "Determination of the Noise Pollution on University (Education) Campuses: a Case study of Ataturk University," *Ekoloji Dergisi*, vol. 23, no. 90, 2014.
- [8] P. K. Padhy and B. K. Padhi, "Assessment of noise quality in BolpurSantiniketan areas (India)," *J. Environ. Res. Develop*, vol. 3, no. 1, pp. 123-126, 2008.
- [9] Y. T. Mustafa, R. T. Ali, and R. M. Saleh, "Monitoring and evaluating land cover change in the Duhok city, Kurdistan region-Iraq, by using remote sensing and GIS," *International Journal of Engineering Inventions*, vol. 1, no. 11, pp. 28-33, 2012.
- [10] Y. T. Mustafa, "Multi-temporal Satellite Data for Land Use/Cover (LULC) Change Detection in Zakhko, Kurdistan Region-Iraq," in *Environmental Remote Sensing and GIS in Iraq*: Springer Water, 2020.
- [11] B. Phukan and K. Kalita, "An experimental study of noise pollution in Gauhati University campus, Guwahati, Assam, India," *International journal of environmental sciences*, vol. 3, no. 5, pp. 1776-1784, 2013.